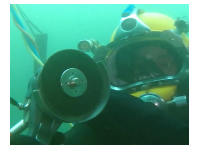


## Gasoline High Pressure Unit

42 LPM @ 190 bar

The gasoline engine driven HDMP190\_42 high pressure unit provides cleaning speed with its 42 LPM flow for cavitation cleaning with the CW350 and ROV lances to remove fouling, oysters, barnacles and other marine life fast. The solid, stand-alone, 4 wheeled cart has a gasoline engine and is compatible with double CW300's, CW350, SR450, SR600, all ROV lances and all underwater tools.



## Specifications

**Compatible with:** Double CW300's, CW350, CW202ROV, CW303ROV, SR450, SR600, All Underwater Tools

**Max. Pressure:** 190 bar (2,755 psi)

**Max. flow:** 42 LPM (11 GPM)

**Power:** 22HP Honda gasoline engine

**Weight:** 150kg (330 lbs)

**Dimensions:** 100x82x85cm  
(39.4x32.3x33.5")

## Features

- Removes medium fouling, debris, corrosion and instable coatings
- Drives all underwater tools
- Electric start
- Heavy duty, 4 wheeled cart
- Manual pressure valve
- Readily serviceable water filter
- Automatic decelerator to reduce RPM in the bypass phase
- No engine-oil safety device
- Motor thermal protection
- Hour counter